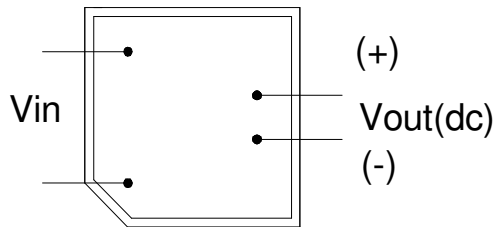




SWITCH MODE POWER SUPPLY

SMPS20 SERIE

3W



Input AC voltage range	85-265Vac
Line Frequency	47-63Hz
Input current (full load)	0.15A max at 85Vac-265Vac
Input Power (no load)	≤ 0.15W at 230V
Output ripple	≤ 200mV
Rise time output voltage	200ms at 80%
Output overcurrent prot.	Yes
Output short circuit prot.	Yes
Thermal protection	Yes
Hi pot	4000 Vac (5mA, 3 seconds)
DC-Insulation resistance	10MΩ min. at 500Vdc
Output line regulation	±2%
Output load regulation	±5%

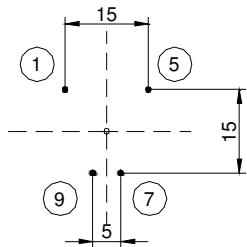
REFERENCE	OUTPUT VOLTAGE (V)	OUTPUT CURRENT (A)	OUTPUT POWER (W)	OPERATING AMBIENT (°C)	OUTPUT REGULATION	EFFICIENCY
SMPS-2003103	3,3	0,30	1	80	±5%	≥65%
		0,75	2,5	60		
		0,90	3	50		
SMPS-2003105	5	0,20	1	80	±5%	≥65%
		0,50	2,5	60		≥75%
		0,90	3	50		≥75%
SMPS-2003109	9	0,11	1	80	±5%	≥65%
		0,17	2,5	70		≥75%
		0,33	3	60		≥75%
SMPS-2003112	12	0,08	1	80	±5%	≥65%
		0,20	2,5	70		≥75%
		0,25	3	60		≥75%
SMPS-2003115	15	0,06	1	80	±5%	≥65%
		0,16	2,5	70		≥75%
		0,20	3	60		≥75%
SMPS-2003118	18	0,50	1	80	±5%	≥65%
		0,13	2,5	70		≥75%
		0,16	3	60		≥75%
SMPS-2003124	24	0,04	1	80	±5%	≥75%
		0,10	2,5	70		
		0,12	3	60		



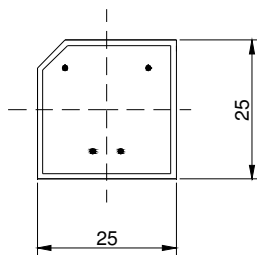
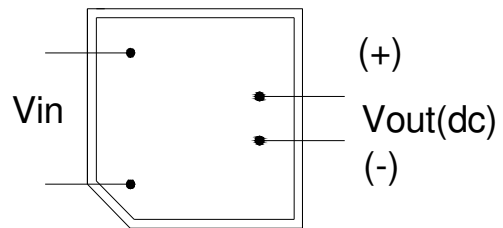
SMPS20 SERIE

SWITCH MODE POWER SUPPLY

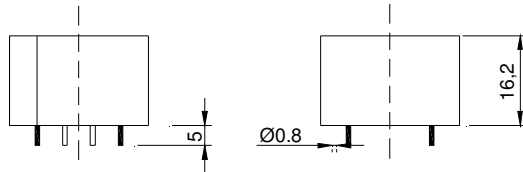
3W



BOTTOM VIEW
Cu SIDE
4 HOLES
Ø 1.2mm.



UNITS: mm.
GENERAL TOLERANCE
ISO 2768 - c



THERMAL CHARACTERISTICS	
Storage ambient temperature	-30°C ~ 85°C
Storage ambient humidity	10% ~ 95%
Operating ambient temperature	-20°C ~ 80°C
Operanting ambient humidity	10% ~ 95%
Maximum working temperature	50°C~ 80°C (see table)
SAFETY	
According to	EN60950, EN60335, EN61558-2 –16, EN61558-2 –17
EMC	
(Conducted and Radiated Emissions)	
According to	EN55032, EN55014
Immunity	
According to	EN61000-3-3, EN61000-4-2, EN61000-4-3, EN61000-4-4, EN61000-4-5, EN61000-4-6, EN61000-4-8, EN61000-4-11
RoHS	
Directive 2015/863/EU	